

Little Tree
e d u c a t i o n

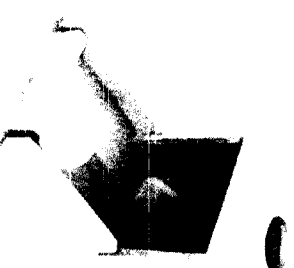
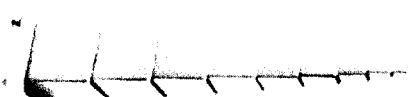
Business Plan &

Planning Board Presentation



Introduction

- What is Little Tree Education?
 - Infant & Toddler Montessori-Based Program
 - A safe & prepared environment
 - The Children's Home
 - Where the teacher serves as a guide
 - High quality care – not a traditional daycare
- Who will Little Tree Education serve?
 - Infant & Toddlers Ages 0-3
 - 50+ children
 - Hours of Operation
 - 7:30am to 6:00pm
 - NH is the #1 state with two working parents
 - True since WWII



What Makes LTTEC Special?

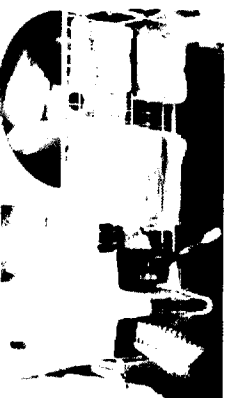
Teach **sustainability** from the beginning

- Site powered by alternative energy
- Building free of toxins and full of natural toys
- Create a community for children & parents
 - Gardening, parenting support groups, yoga, baby food making classes, date night, and much more
- ESTABLISH A LOVE OF LEARNING!

Explore:
Children touch,
see, listen, and
smell their
environment



Discover:
Children
uncover
mysteries



Achieve:
Children learn
through
experience



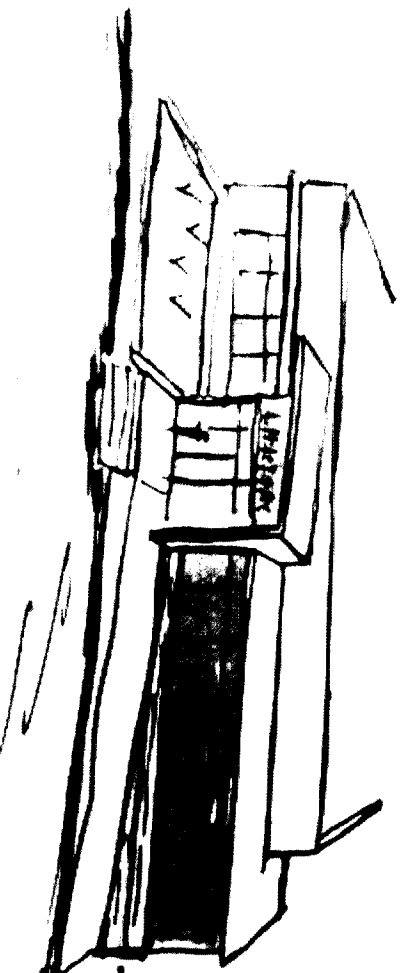
What's the Plan?

- Building & property renovations in fall 2012
- Grand Opening January 2013
- Managed by
 - Sarah Greenshields – Operations & Finance
 - Callie Glanzer – Vision & Business Development
 - Bevin Smith – Director, Sales & Marketing
- At capacity, LTEC will employ 12 Teachers
- Internship opportunities for students
 - University of New Hampshire
 - Community College System of NH



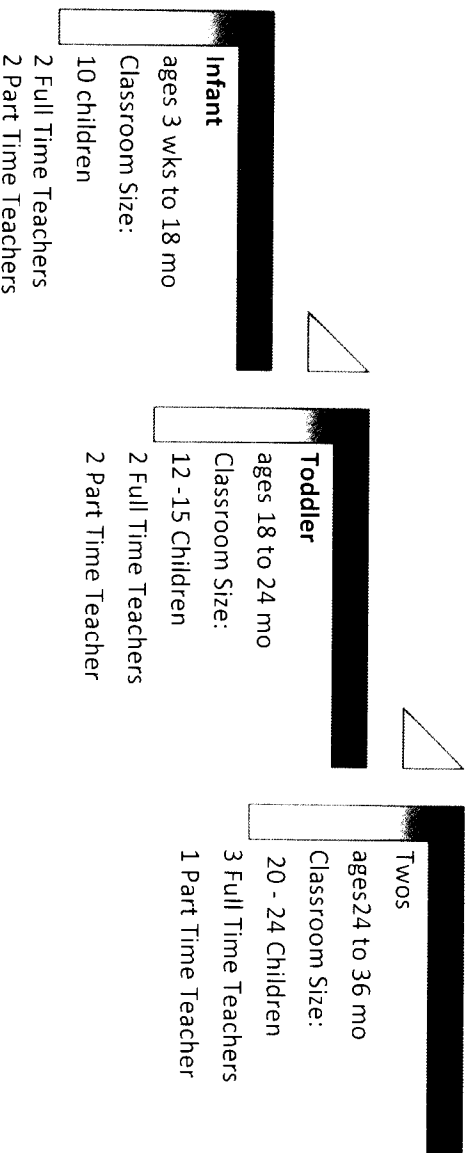
What's the building plan?

- Renovate the building to meet the needs of a modern school
 - Bill Shaheen is the property owner and will lease the building to the business
 - Building renovations will take place over the next three months
- Rt. 108 offers easy access to Dover & Durham
 - Great proximity to the University of NH
 - Estimated 20K cars p/day
- Major employers
 - * UNH
 - * Liberty Mutual
 - * Dell
 - * Measured Progress
 - * Hospital



Operations

Safety is our # 1 priority. Traffic flow & parking are very important and we have set a staggered drop-off / pick-up schedule. 30-minutes at the start and end of day.



Daily Hours:

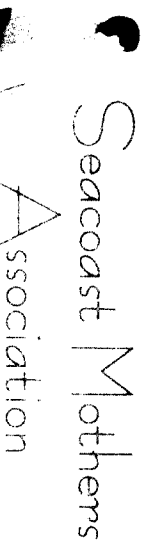
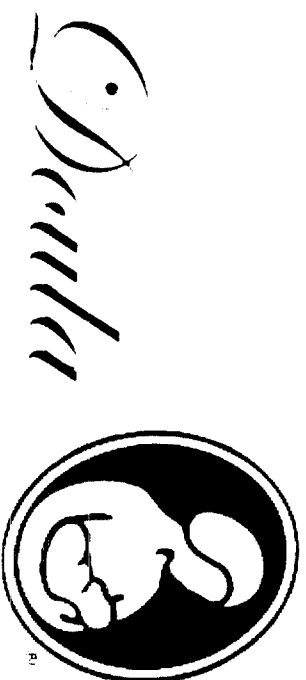
LTEC takes pride in offering significant amount of schedule flexibility. Hours of operation are as follows:

Early Drop-Off	7:15 am	~ day begins at 8:00 am
Drop-Off	7:30	~ \$10 late fee after 12:45 pm
Half Day Pick-Up	12:30 pm	~ circle begins at 1:00 pm
Half Day Drop-Off	12:45 pm	~ \$10 late fee after 3:45 pm
Short Day Pick-Up	3:30	~ \$10 late fee after 5:45 pm
Full Day Pick-Up	5:30 pm	

Get Networked



- Share the love to increase awareness
 - *Become an integrated member of the seacoast baby network*
- Rent the facility for FREE to Midwives, Doulas, Yoga Teachers, Music Teachers, Parent Coaches and Birthing Coaches
- Join the Green Alliance
- Offer a series of Open Houses
- Offer Parent Education Classes
- Offer CPR & First Aid Classes



About Us

Now Let's Open!

- Little Tree's Team is highly qualified and is prepared to offer the highest quality care for the children and families
- Little Tree's partners are dedicated to see the business succeed
 - 3 founders / investors
 - Enthusiastic Landlord
- Little Tree hopes to be a great addition to the Town of Madbury



littletree
education

SANITARY
SEWER

PROpane
TANK

PLAYGROUND

EXIT

EXIT

WELL

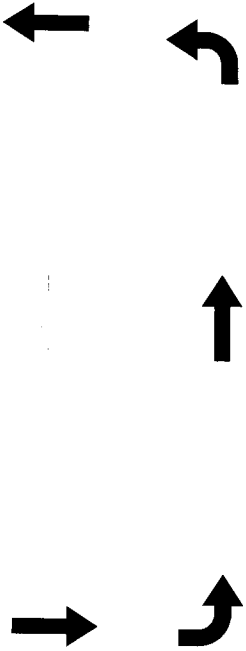
PARKING

BUILDING



PARKING

POWER



NORTH

ROAD US ROUTE 108

DESIGN by Brian Hamor
 458 Mountain Rd.
 Slowe, VT 05672

JT12 TREE EDUCATION
 314 ROUTE 58
 MONTPELIER, VT

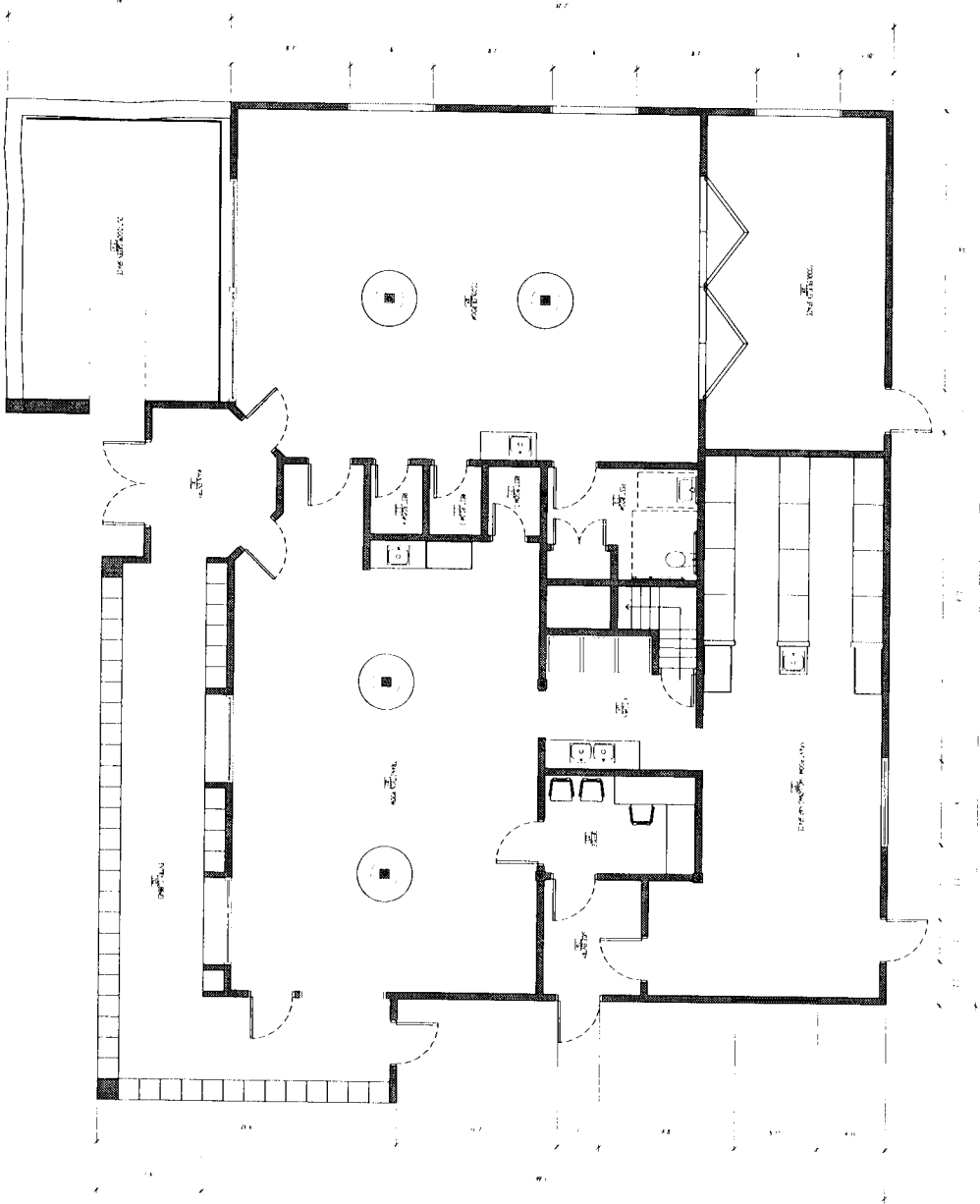
SITE PLAN

DATE: 8-9-2012

SCALE: 1" = 10'

30x30x30x30

20x20x20x20



DESIGN by Brian Hamor
458 Mountain Rd.
Stowe, VT 05672

PROJECT: 20100101
DATE: 8/23/12
SCALE: 1/4" = 1'-0"
DRAWN BY: B. HAMOR
CHECKED BY: B. HAMOR

FLOOR PLAN

A1